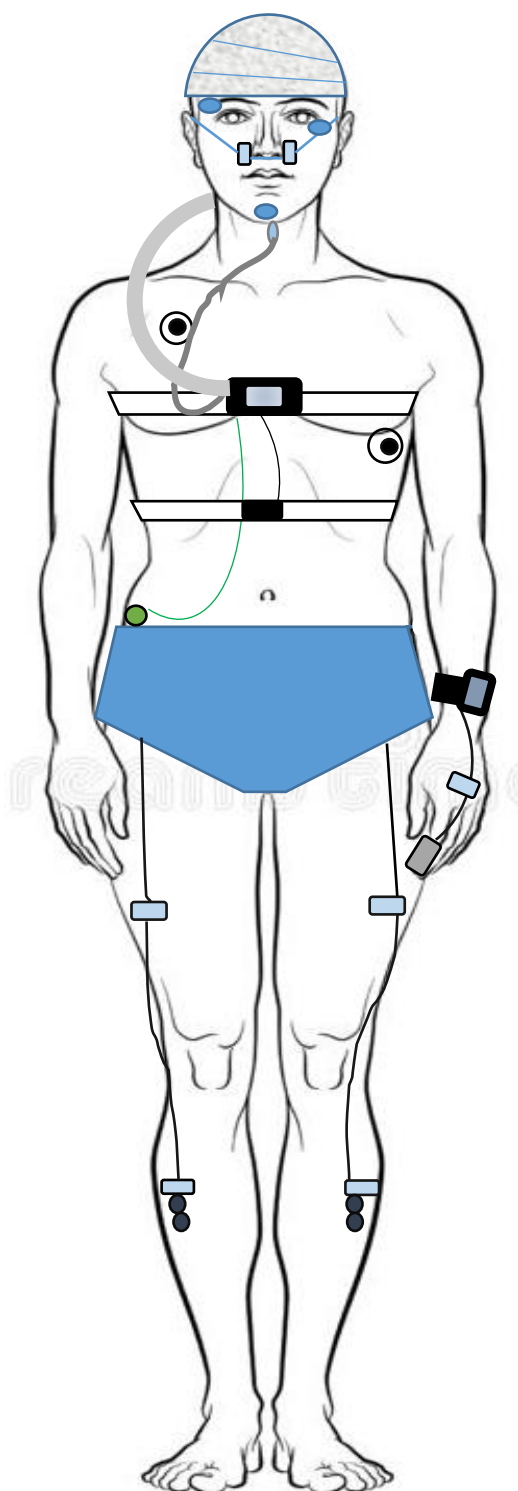


PSG, Polysomnography

Patient instruction

1(1)



The following measurement electrodes will be attached at the examination unit during the installation appointment:

1. EEG electrodes in the head area, EOG electrodes in the corners of the eyes and EMG electrodes on the chin. Gauze is wrapped over the EEG electrodes and a mesh cap is placed on top. The electrode attachment is ensured with skin tape.
2. Two ECG electrodes in the chest area.
3. Respiratory belts at the armpit and the diaphragm levels.
4. Movement electrodes on the legs.

It is mandatory to install the sensors in items 5 and 6 at home before going to bed:

5. **Pulse oximeter:**
 - attach the wristband
 - place the fingertip probe on the finger
 - **TAPE** the lead to the back of your hand
6. **Nasal cannula:**
 - connect the tube to the A1 device at PRES
 - place the prongs inside the nostrils (curving downwards)
 - bring the lead around the ears and under the chin
 - tighten the tubes under the chin and attach the tube with **TAPE** to the cheeks
7. **Put the cap strap under the chin**

IN THE MORNING:

- You can remove the cannula and oximeter when you wake up. Place them in the case.
- Please fill the sleep questionnaire and put it in the case as well.
- Bring the case to the examination unit with you. The remaining recording equipment will be removed at the unit.